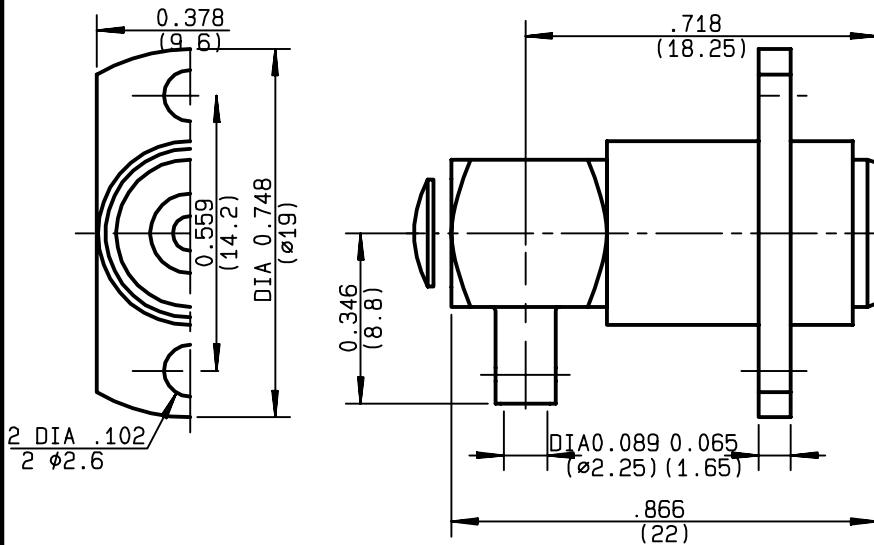
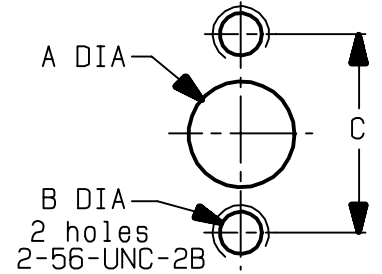


**RIGHT ANGLE 2 HOLES FLANGE FLOATING JACK
SOLDER TYPE - CABLE .085 - PACK. 100**

R128.360.827
SERIES BMA COM



PERCAGE PANNEAU
MOUNTING HOLE



	MM		INCH	
	maxi	mini	maxi	mini
A	9.6	9.55	0.378	0.376
B	-	-	0	0
C	14.3	14.1	0.563	0.555

NOMINAL IMPEDANCE	50 Ω
FREQUENCY RANGE	0-12.4 GHz
TEMPERATURE RATING	-65/+125 °C
V.S.W.R	1.15 + .025 x F(GHz)Maxi
RF INSERTION LOSS	0.07 √F(GHz) dB Maxi
VOLTAGE RATING	350 Veff Maxi
DIELECTRIC WITHSTANDING VOLTAGE	1000 Veff Mini
INSULATION RESISTANCE	5000 MΩMini
HERMETIC SEAL	NA Atm.cm ³ /s
LEAKAGE (pressurized only)	NA
MECHANICAL DURABILITY	500 Cycles
WEIGHT	8.2 gr
SPECIFICATION	

CABLES : **KS 1**
RG 405

OTHERS CHARACTERISTICS

CABLE RETENTION	136	N Mini
CENTER CONTACT RETENTION		
Axial force - mating end	18	N Mini
Axial force - opposite end	18	N Mini
Torque	NA	cm.N Mini
RECOMMENDED TORQUES		
Mating	NA	cm.N
Panel nut	NA	cm.N
Clamp nut	NA	cm.N

CONNECTOR PARTS	MATERIALS	FINISH	(all values are given in micrometers)
BODY	BRASS	BBR 2	
OUTER CONTACT	BRASS	BBR 2	
CENTER CONTACT	BRONZE	GOLD 1.3 OVER NICKEL 2	
INSULATOR	PTFE	-	
GASKET		-	
OTHERS PIECES	BRASS	BBR 2	

ISSUE	CREATION DATE	FILE PART-NUMBER
9926A02	03/10/1996	EPC96-06



RADIALL®

BAFFERT

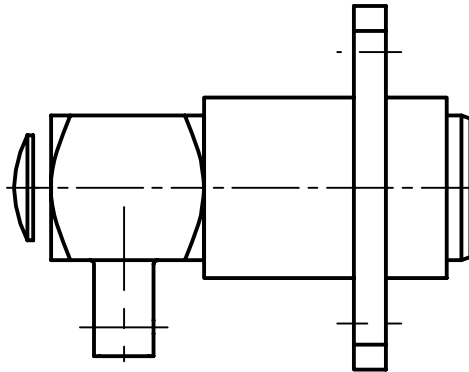
The information given here is subject to change without notice.
Design changes may be in order to improve the product .

Connect to the future



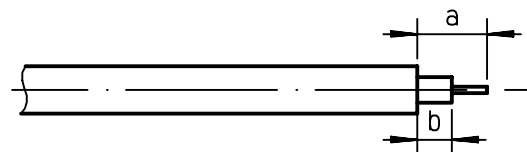
R128.360.827

ISSUE 9926A02 SERIES BMA COM



①

1-1 Strip the cable .



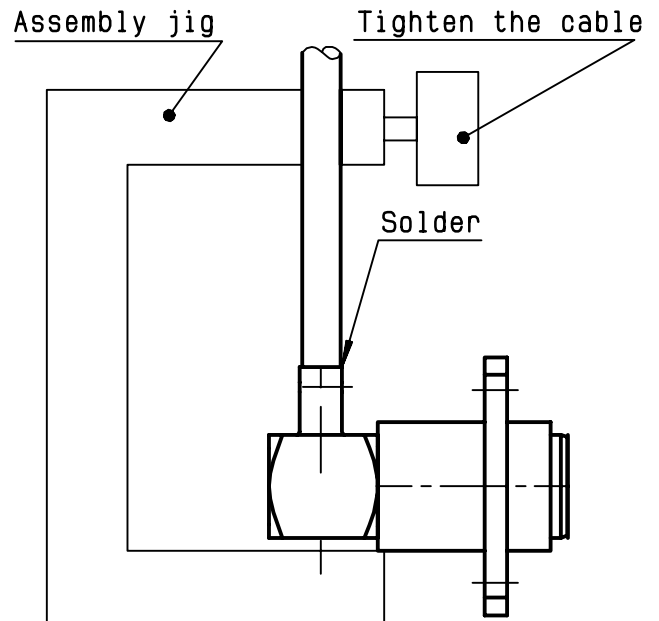
Stripping	a	b	c	d	e
inch	0.169	0.055	0	0	0
mm	4.3	1.4			

②

2-1 Introduce the cable into the connector body until it stops.
Place the sub assembly into the assembly jig R 282 740 (or equivalent)

2-2 Solder the body onto the cable.

2-3 Let the assembly cool down before removing it from the jig .



③

3-1 Solder inner conductor.
3-2 Put the cap in its place.
3-3 Press cap flush or slightly below surface of body assembly.

